

# MXL TIMING PULLEYS

## METRIC TIMING PULLEY

2.03mm Trapezoidal Pitch

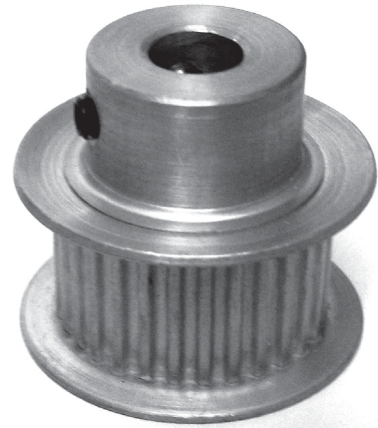
For 9.5mm Wide Belts

Hub

Aluminum

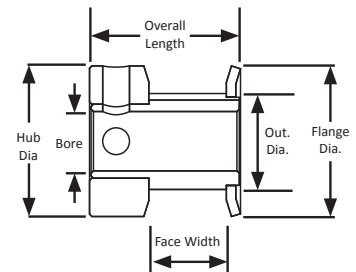
Clear Anodized

Metric Finished Bore

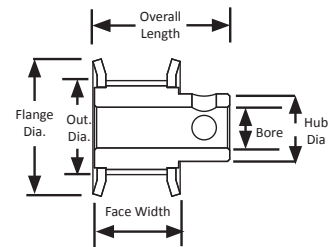


Part Number	No. of Teeth	Type	Pitch Dia. (mm)	Out. Dia. (mm)	Flange Dia. (mm)	Bore (mm)	Face Width (mm)	Overall Length (mm)	Hub Dia. (mm)	Set Screw
10MP037M6CA3	10	6C	6.5	6.0	10.8	3.0	-	17.5	10.8	M2
11MP037M6CA3	11	6C	7.1	6.6	11.4	3.0	-	17.5	11.4	M2
12MP037M6CA3	12	6C	7.8	7.3	12.2	3.0	-	17.5	12.2	M2
14MP037M6CA3	14	6C	9.1	8.6	13.5	3.0	-	17.5	13.5	M2
15MP037M6CA4	15	6C	9.7	9.2	14.1	4.0	-	17.5	14.1	M2.5
16MP037M6CA4	16	6C	10.3	9.8	14.7	4.0	-	17.5	14.7	M2.5
18MP037M6FA4	18	6F	11.6	11.1	16.1	4.0	13.1	19.1	7.9	2 x M2.5 @ 90°
18MP037M6CA6	18	6C	11.6	11.1	16.1	6.0	-	17.5	16.1	2 x M3 @ 90°
20MP037M6FA4	20	6F	12.9	12.4	17.4	4.0	13.1	19.1	9.2	2 x M2.5 @ 90°
20MP037M6CA6	20	6C	12.9	12.4	17.4	6.0	-	17.5	17.4	2 x M3 @ 90°
21MP037M6FA4	21	6F	13.6	13.1	18.0	4.0	13.1	19.1	9.9	2 x M2.5 @ 90°
21MP037M6CA6	21	6C	13.6	13.1	18.0	6.0	-	17.5	18.0	2 x M3 @ 90°
22MP037M6FA4	22	6F	14.2	13.7	18.8	4.0	13.1	19.1	9.9	2 x M2.5 @ 90°
22MP037M6CA6	22	6C	14.2	13.7	18.8	6.0	-	17.5	18.8	2 x M3 @ 90°
24MP037M6FA6	24	6F	15.5	15.0	20.1	6.0	13.1	20.6	11.2	2 x M3 @ 90°
25MP037M6FA6	25	6F	16.2	15.7	20.7	6.0	13.1	20.6	11.9	2 x M3 @ 90°
28MP037M6FA6	28	6F	18.1	17.6	22.7	6.0	13.1	20.6	12.5	2 x M3 @ 90°
30MP037M6FA6	30	6F	19.4	18.9	24.0	6.0	13.1	20.6	13.9	2 x M3 @ 90°
32MP037M6FA6	32	6F	20.7	20.2	25.4	6.0	13.1	20.6	15.2	2 x M3 @ 90°
36MP037M6FA6	36	6F	23.3	22.8	28.1	6.0	13.1	20.6	17.2	2 x M3 @ 90°
40MP037M6FA6	40	6F	25.9	25.4	30.7	6.0	13.5	21.4	19.2	2 x M3 @ 90°
42MP037M6FA6	42	6F	27.2	26.7	32.0	6.0	13.5	21.4	20.5	2 x M3 @ 90°
44MP037M6FA6	44	6F	28.5	28.0	33.4	6.0	13.5	21.4	21.8	2 x M3 @ 90°
48MP037M6FA6	48	6F	31.0	30.5	36.1	6.0	13.5	21.4	23.8	2 x M3 @ 90°
60MP037M6FA6	60	6F	38.8	38.3	43.9	6.0	13.5	21.4	31.0	2 x M3 @ 90°
60MP037M6A6	60	6	38.8	38.3	-	6.0	-	22.2	29.2	2 x M3 @ 90°
72MP037M6A6	72	6	46.6	46.1	-	6.0	-	22.2	30.4	2 x M3 @ 90°
80MP037M6A8	80	6	51.7	51.2	-	8.0	-	22.2	38.1	2 x M4 @ 90°
90MP037M6A8	90	6	58.2	57.7	-	8.0	-	22.2	38.1	2 x M4 @ 90°
100MP037M6A8	100	6	64.7	64.2	-	8.0	-	22.2	38.1	2 x M4 @ 90°
120MP037M6A10	120	6	77.6	77.1	-	10.0	-	22.2	38.1	2 x M5 @ 90°

TYPE 6C



TYPE 6F



TYPE 6

